



**10 TREES**



PLANTED FOR EVERY 200 UNITS SOLD

# tala

CONSERVATION  
THROUGH  
BEAUTY



@tala



@WorldofTala



retail@talaled.com

**Tala**

Unit 56

Regent Studios

8 Andrews Road

London E8 4QN

**Contact**

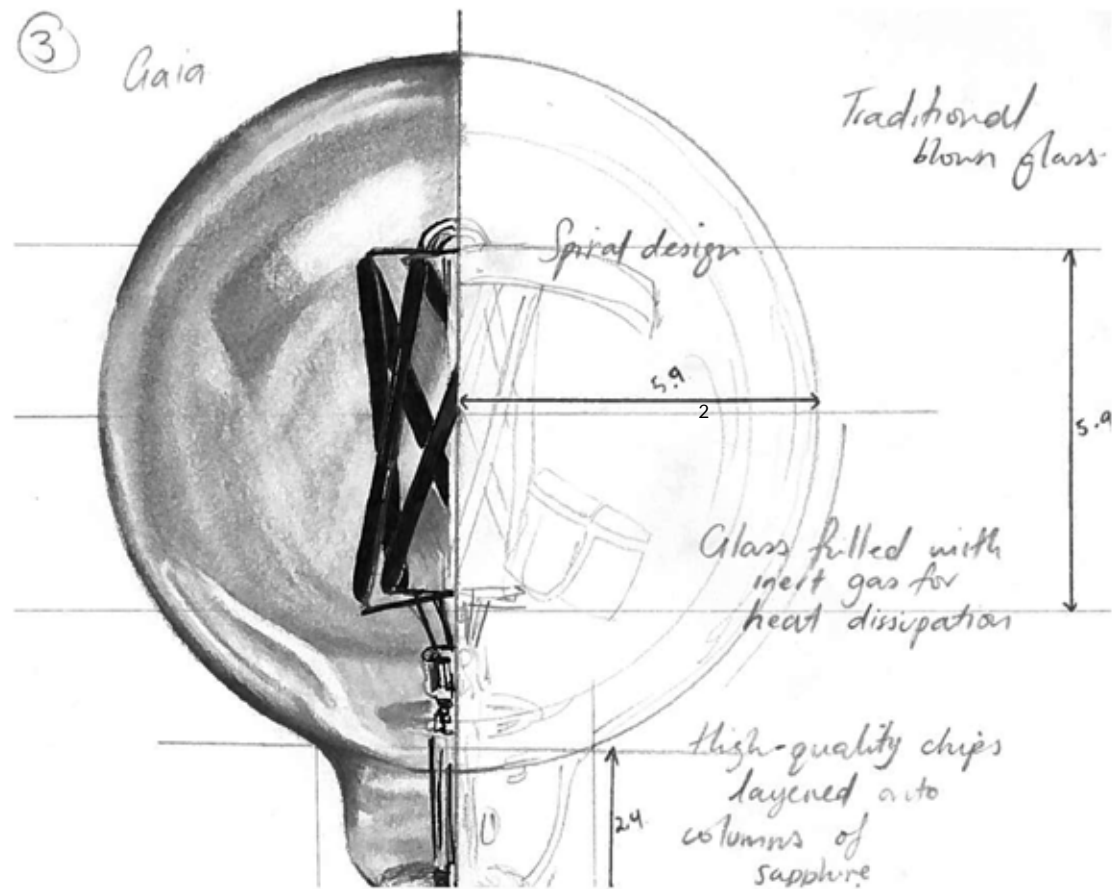
T: +44 (0) 20 3026 324

E: retail@talaled.com

E: distribution@talaled.com

W: www.talaled.com

10  
TREES



TALA   CONSERVATION THROUGH BEAUTY	4
TEN TREES	6
THE TALA DESIGN RANGE	10
WALNUT KNUCKLE PENDANT	12
OAK KNUCKLE PENDANT	14
WALNUT TOUCH LAMP	16
OAK TOUCH LAMP	18
THE TALA FEATURE RANGE	22
GAIA	24
MINERVA	26
CHIMERA	28
ZION	30
ELVA	32
ARIES	34
EROS	36
SQUIRREL CAGE	38
TOTEM	40
PORCELAIN FINISH	42
BRASS PENDANTS	44
THE TALA CLASSIC RANGE	46
GLOBE	48
CROWN	49
LURRA	50
CANDLE	51
PLUTO	52
PYGMY	53
GU10	54
TECHNICAL SPECIFICATION   FEATURE RANGE	56
TECHNICAL SPECIFICATION   CLASSIC RANGE	61
CLIENT LIST	64
DISTRIBUTORS	66

# tala

## CONSERVATION THROUGH BEAUTY

Tala is a young British lighting brand with a mission to create the world's most beautiful light bulbs.

The word Tala originates from an African concept of conservation through beauty and serves as our unifying ethos. The company was founded by four partners at The University of Edinburgh with a shared passion for creating exquisite products that have a positive impact on the world.

Our distinctive design rubric combines classic decorative qualities, industrial influences and pioneering LED technology. What makes the Tala bulb unique is its uncompromising approach to both beautiful design and sustainability.

With exciting developments in materials science, we are now able to design lighting with a strong shift from the functional towards the emotional; lighting as an experience is the backbone of the Tala range. When you purchase a Tala light you're investing in our ethos – this is represented in every detail, from the packaging down to our tree planting programme. The Ten Trees programme pledges that for every 200 units sold we plant 10 trees; making our products truly carbon-negative.

The Tala LED range is built for curating a contemporary and inviting atmosphere. There are two ranges in the collection: the Feature and the Classic. With an emphasis on warm, high-colour rendering and quality components, Tala is perfect for a variety of interior-design styles.

A Tala light is up to 90% more energy efficient and lasts fifteen times longer than its incandescent counterparts.



# 10 TREES



PLANTED FOR EVERY 200 UNITS SOLD

Embedded into our business is the ethos of responsible entrepreneurship. By replacing incandescent lighting, each of our bulbs prevents one tonne of CO<sub>2</sub> from being emitted into the atmosphere over its lifetime. We also plant trees, which are beautifully designed by nature to absorb CO<sub>2</sub> from the atmosphere, helping us negate our carbon footprint. We partner with the Heart of England Forest (HoEF), a charity working to plant, protect, and preserve a huge broadleaf forest in the middle of England.

## A Tala bulb in numbers

Tala LEDs use ten times less electricity than incandescents and last over 10 years. This amounts to significant savings on electricity bills and avoided bulb replacements.

*Savings from one Tala bulb*

kWh Saved per Year: **157**

Electricity Cost Saved per Year: **£14.00**

Lifetime Electricity Cost Savings: **£97.00**

Return on Investment: **95%**

Simple Payback on Energy Consumption: **1 year**

Lifetime Bulb Replacement Savings: **£62.00**

CO<sub>2</sub> Savings per Year: **30kgs**



Joe Armitage  
Design Director

Ciaran Dawson  
Co-founder

Josh Ward  
Co-founder

Max Wood  
Co-founder

Yan Duo  
Supply Chain  
Director

William Symington  
Co-founder



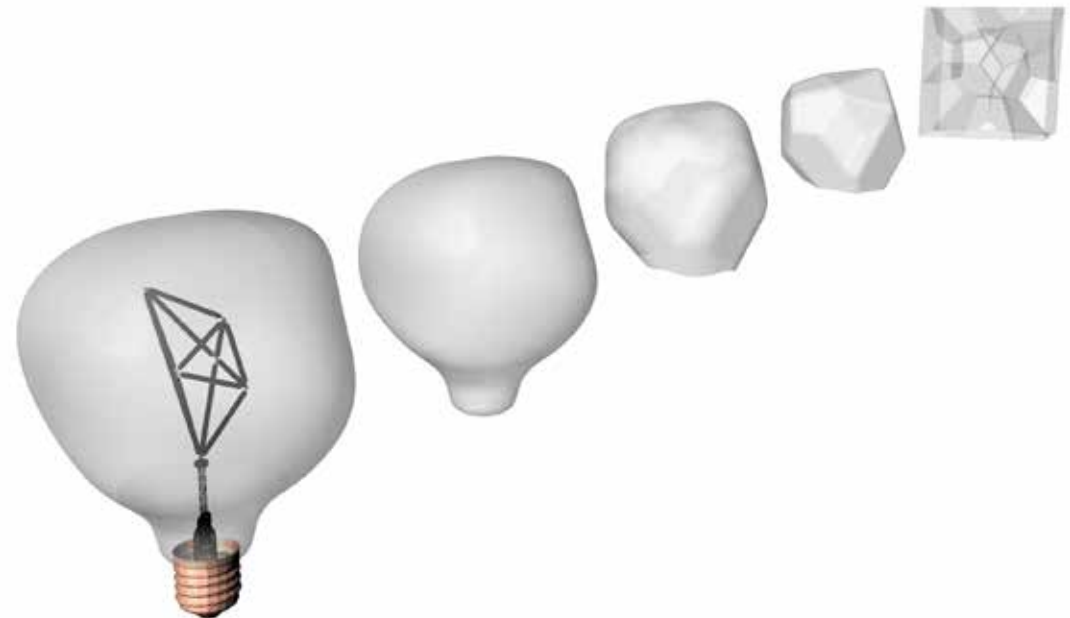
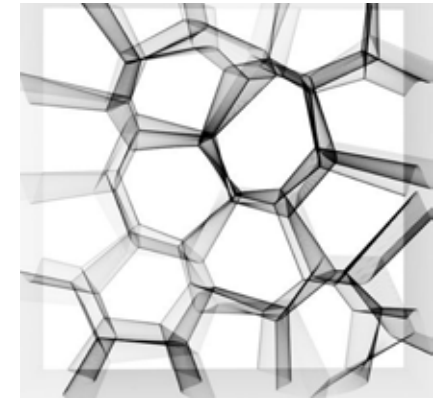


# THE TALA DESIGN RANGE

This September sees the release of Tala's newest range of LED filament bulbs and lighting designs. Reflecting Tala's environmental ethos, the forms are inspired by the voronoi pattern found extensively in nature.

Tala's ten trees programme ensures that for every 200 bulbs sold, 10 oaks are planted in the Heart of England Forest (registered Charity no. 1097110). It is amongst the canopies of these trees that the alluring form can be found.

The glass bulb represents the natural voronoi forms, gradually eroded to create a subtle organic globe. The glass exterior is accentuated by the angular filament arrangement illuminating within. The range consists of various bulbs ranging in both size and form celebrating the beauty and variety found in nature.



# WALNUT KNUCKLE PENDANT

220-240 VOLTS | MAX WATTAGE 60W

LUMINAIRE CLASS II

PENDANT DIMENSIONS 85 MM X 50 MM

CEILING ROSE DIMENSIONS 80 MM X 25 MM

A knuckle of pure American walnut ensconced with solid brass trimming. This beautiful hardwood is filled with character and durability making for a pendant that is set to last. This paired-back pendant has been designed to celebrate the materials with a unique elegant form. The knuckle pendant is built to complement a variety of bulb designs and looks great alone or in clusters. Our 3-metre black threaded cord has been crafted with special silicon to help avoid any kinking.



# OAK KNUCKLE PENDANT

220-240 VOLTS | MAX WATTAGE 60W

LUMINAIRE CLASS II

PENDANT DIMENSIONS 85 MM X 50 MM

CEILING ROSE DIMENSIONS 80 MM X 25 MM

A knuckle of pure American Oak ensconced with solid brass trimming. This paired-back pendant has been designed to celebrate the materials with a unique elegant form. The knuckle pendant is built to complement a variety of bulb designs and looks great alone or in clusters. Our 3-metre black threaded cord has been crafted with special silicon to help avoid any kinking.





# WALNUT TOUCH LAMP

220-240 VOLTS | MAX WATTAGE 60W

LUMINAIRE CLASS II

LAMP DIMENSIONS 85 MM X 135 MM

3 STEP DIMMING TOUCH LAMP

Introducing the sculpted walnut and brass table lamp. An elegant cylindrical design showcases the magnificent character of the wood. The base features a slab of solid brass that acts as the touch-switch control. The high silicon content black anti-kink cord streams gracefully towards the socket. Every detail is considered for harmony, including the curvature of the lip towards the bulb holder.

This unique table lamp design is the perfect way to exhibit any number of the Tala bulbs.

We now have an elegant table lamp design centred on the tactile and modern approach to dimming.



# OAK TOUCH LAMP

220-240 VOLTS | MAX WATTAGE 60W

LUMINAIRE CLASS II

LAMP DIMENSIONS 85 MM X 135 MM

3 STEP DIMMING TOUCH LAMP

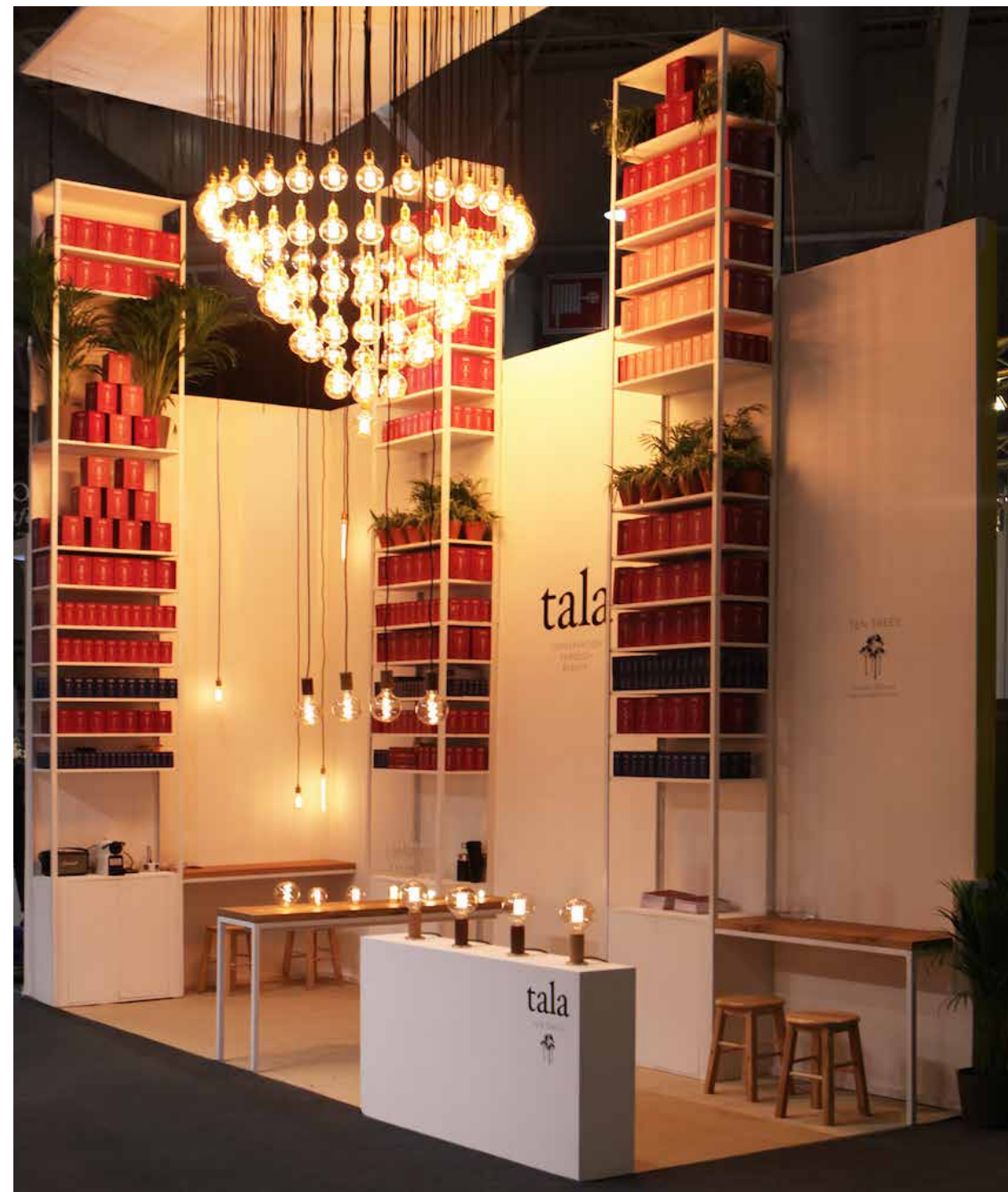
Introducing the sculpted oak and brass table lamp.

An elegant cylindrical design showcases the magnificent character of the wood. The base features a slab of solid brass that acts as the touch-switch control. The high silicon content black anti-kink cord streams gracefully towards the socket. Every detail is considered for harmony, including the curvature of the lip towards the bulb holder.

This unique table lamp design is the perfect way to exhibit any number of the Tala bulbs.

We now have an elegant table lamp design centred on the tactile and modern approach to dimming.







# THE TALA FEATURE RANGE

This collection of designs challenges the usual preconceptions of the light bulb. A host of statement glass shapes, combined with intricate LED filament structures, makes the Tala feature range stand out.

These versatile bulb designs work well alone, in series or in combination with other fixtures. Every light in this range is imbued with a specific colour temperature of 2,200 Kelvin, which is the equivalent of a warm, candle-lit setting.

We put a lot of love into our product designs and, as such, want our carefully chosen filament arrangements to be easy on the eye. The lumen output (strength of light) is carefully balanced to achieve the right level between decorative and functional.

This results in a consistent, soft light that accentuates each of the individual designs.

We invite you to explore the collection and see how to transform your interior with the Tala feature bulbs.



# GAIA

4 and 6 WATT | 480 LUMENS | 2200K

Tala's 4w and 6W Gaia LED has a unique filament structure enveloped by a traditional blown-glass form. Using our distinct tinting technique, we soften and add character to the hue of our bulb, resulting in a more individual look and quality of light.

The Gaia's sapphire filament array includes six specially designed thin-filament LED columns to produce a central vortex of warm, soft light. The Gaia LED will easily retrofit into existing fittings.





# MINERVA

6 WATT | 360 LUMENS | 2200K

Introducing the Minerva, a classic Gaia filament pattern combined with a smoked monochrome inspired finish. This custom smoked glass showcases a sleek reflective orb when off. Powered on, the Minerva reveals the warm vortex of Tala filaments from within. The interplay between on / off towards day and night makes this design both unique and playful.



# CHIMERA

6 WATT | 480 LUMENS | 2200K

The Chimera design is inspired by the 1960s-style electric arc lamps. These lamps were typically used for high intensity, super white and bright light. Our take on this beautiful lamp is to celebrate the form of the glass and make the light output inviting. The swirling filaments within amplify an atmospheric, high colour render light. This style of bulb looks particularly good in our brass and knuckle pendant series.



# ZION

6 WATT | 420 LUMENS | 2200K

The new Zion bulb embodies the iconic organic form of the classic incandescent bulbs but with an LED twist.

Featuring twelve specialized sapphire filaments circling a central column of glass, this design emits a swirling pattern of warm light within a beautiful blown-glass envelope.

With a colour rendering of 95 and a life expectancy of +30,000 hours, the Zion is the perfect statement bulb for your interior project.



# ELVA

3 and 6 WATT | 480 LUMENS | 2200K

Tala's 3 and 6W Elva LED uses the same traditional blown-glass sphere as its larger sibling, the Gaia, with the added advantage of being more compact. Its unique design, coupled with a beautiful, warm glow, make the Elva the perfect choice for an exposed fitting or a hanging pendant.



# ARIES

6 WATT | 480 LUMENS | 2200K

This unique design brings a warm ambiance to any setting, creating an inviting atmosphere while also saving energy.

Featuring eight intercrossing filaments within an untinted blown-glass orb, the Aries unit distributes an even throw of warm light and provides an interesting pattern of light to accent your space.





# EROS

3 WATT | 240 LUMENS | 2200K

The Eros bulb is a playful design of interlocking filament diamonds. A soft, warm light emanates from the LED arrangement and makes for an interesting shape when used in series or alone.



# SQUIRREL CAGE

3 WATT | 240 LUMENS | 2200K

The Tala 3W Squirrel Cage is a new addition to the range and showcases an unique filament technology. There is nothing like it on the market.

Featuring eight golden sapphire filaments enveloped by a traditional blown-glass form, this bulb is the perfect choice when used in series or alone.

The fully dimmable, tinted-glass unit is an all-round classic design and fits well exposed on a pendant or behind a glass shade.



# TOTEM

1 WATT | 50 LUMENS | 2200K  
4 WATT | 240 LUMENS | 2200K  
4 WATT | 320 LUMENS | 2200K

The Totem design is a distinctive tubular glass shape that comes in three lengths and filament patterns. This bulb is great for creating linear decorative grids of light and works well with a range of fixture designs.



## PORCELAIN FINISH



Tala can now offer custom glass finishes with our new porcelain range. We can create a light frosted glass or a pure matte white finish. Get in touch for our bespoke range and MOQs.



The UNUM bulb is the start of our new exploration into advanced LED design. After years of R&D we are now able to safely bend and warp filaments to follow a clean minimalist approach. This concise and modern bulb complements an array of lighting needs. This design will be released this summer.

## BRASS PENDANT



This minimalist turned brass pendant embodies simplicity. The colour, strength and malleability of the brass make it a perfect material for pendants.



The ideal partner for a host of bulb designs, this versatile fixture is a staple for modern interiors. Our 3-metre black threaded cord has been crafted with special silicon to help avoid kinking.



# THE TALA CLASSIC RANGE

The classic range comprises a set of iconic bulb shapes to retrofit a wide variety of general and decorative lighting needs.

Unique to Tala is our 2,500 Kelvin colour temperature. This perfectly mimics the original Edison filament colour temperature and has high colour-rendering. A home lit with Tala bulbs is uniformly warm and inviting but benefits from the added energy savings and longevity of our LED filament technology.

Critical to the design of the classic range was our wish to achieve a shadowless omni-directional light throw. This means that, whether naked or behind a shade, Tala classic bulbs will deliver uninterrupted light.

The Edison Lamp has changed little from its original conception in the 1870s, yet this more industrial exposed style of lighting remains incredibly popular.

We have designed and manufactured beautiful bulbs that mimic the aesthetic and warmth of the Edison, whilst retaining the energy saving capabilities of the modern LED.



# GLOBE



6 WATT | 480 LUMENS | 2500K

The Tala 6W Globe is design-built to replace your 50W incandescent. Eight columns of sapphire substrate form the centerpiece of this light to produce a strong and smooth and warm light. The Globe is comfortable naked or behind any lampshade.

# CROWN



3 WATT | 300 LUMENS | 2500K

The Tala 3W Crown is beautiful and energy efficient. This globe replaces your 30W bulb with the same rich, warm glow whilst reducing your energy bills by up to 90%.

# LURRA



3 WATT | 240 LUMENS | 2200K

The T38 Lurra bulb has a discreet and charming design that partners well with a range of fixtures. Looking for an alternative to the classic Edison bulb shape?

The Lurra delivers on both performance and style with a contemporary glass form and a traditional filament arrangement.

# CANDLE



4 WATT | 320 LUMENS | 2500K

Tala's 4W Candle LED is the perfect replacement for your 35W incandescent candle lighting. This slender but powerful luminaire, with its dimmable functionality, gives even the most discerning clients the full range luminous flux to create beautifully lit spaces.

Tala also supply a 2W version for those looking for low-lit ambient lighting.

## PLUTO



3 WATT | 240 LUMENS | 2500K

Tala's 3W Pluto echoes a classic bulb shape and uses 4 elegant filaments in a traditional arrangement. The Pluto provides a warm, rich glow that will complement any interior. Tala also supply a tinted version for those looking for low-lit ambient lighting.

## PYGMY



2 WATT | 120 LUMENS | 2200K

This modest shape is designed for delivering beautiful warm light to discrete fixtures and challenging form factors. This style can offer a fun alternative to the classic candelabra shape. The Pygmy light is retrofittable into a variety existing and modern fittings. Retaining the custom warm tinted glass and high colour rendering; this bulb is a versatile essential.

# GU10

5 WATT | 400 LUMENS | 2500K

Tala's 5W GU10 LED is an ideal choice for any environment. From kitchens to bathrooms, restaurants to offices, this high-quality light offers a perfect solution at an affordable price.

While maintaining Tala's individual design our GU10 uses high powered COB chips to deliver a strong, warm light pattern and delivers exceptional colour rendering. This GU10 is a retrofit for traditional 50W halogen bulbs.

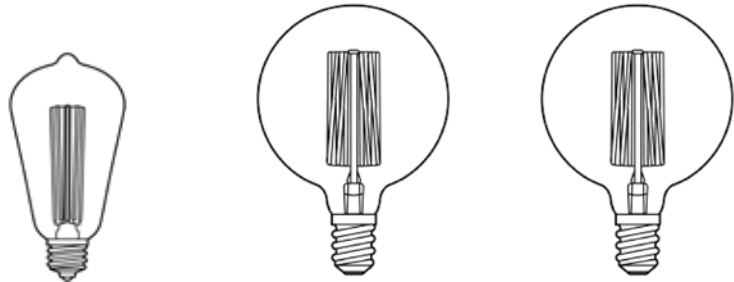




TECHNICAL SPECIFICATION | FEATURE RANGE



NAME	3W ELVA	6W ELVA	3W EROS
PRODUCT CODE	ELVA-3W-2200K-E27-T	ELVA-6W-2200K-E27-T/NT	EROS-3W-2200K-E27-T
VOLTS	240V	240V	240V
WATTS	3W	6W	3W
CRI:		CRI: >95	CRI: >95
BASE	E26/E27	E26/E27/B22	E26/E27
DIMMABLE	DIMMABLE	DIMMABLE	DIMMABLE
LUMENS	240 LUMENS	480 LUMENS	240 LUMENS
LUMENS/WATT	80 LUMENS/WATT	80 LUMENS/WATT	80 LUMENS/WATT
COLOUR TEMPERATURE	WARM TINTED/2200K	WARM TINTED/WHITE/2200K	WARM TINTED/2200K
MERCURY FREE	MERCURY FREE = 0.0MG	MERCURY FREE = 0.0MG	MERCURY FREE = 0.0MG
SWITCH CYCLES	SWITCH CYCLES: 30,000	SWITCH CYCLES: 30,000	SWITCH CYCLES: 30,000
AVERAGE LIFESPAN	AVERAGE LIFESPAN: 30,000HRS	AVERAGE LIFESPAN: 30,000HRS	AVERAGE LIFESPAN: 30,000HRS
WATT REPLACEMENT	WATT REPLACEMENT: 25W	WATT REPLACEMENT: 45W	WATT REPLACEMENT: 25W
BULB DIMENSIONS	Ø95MM X L140MM	Ø95MM X L140MM	Ø95MM X L140MM
WARM UP TIME	WARM UP TIME: INSTANT	WARM UP TIME: INSTANT	WARM UP TIME: INSTANT
WORKING TEMPERATURE	WORKING TEMPERATURE:-20°C TO 40°C	WORKING TEMPERATURE:-20°C TO 40°C	WORKING TEMPERATURE:-20°C TO 40°C
WARRANTY	WARRANTY: 3 YEARS	WARRANTY: 3 YEARS	WARRANTY: 3 YEARS
DIMMING TECHNIQUE	TRAILING EDGE	TRAILING EDGE	TRAILING EDGE
SAFETY TAG	TALA CE 3W 220V 50HZ DATE	TALA CE 6W 220V 50HZ DATE	TALA CE 3W 220V 50HZ DATE
GLASS	TINTED	TINTED/CLEAR	TINTED
BASE	GOLD CAP	GOLD CAP	GOLD CAP
TYPE	G95	G95	G95
PF	0.9	0.9	0.9
INPUT VOLTAGE	110-240V	110-240V	110-240V
IP	IP54	IP54	IP54
BEAM ANGLE	360	360	360
CERTIFICATES	CE, ROHS, UL	CE, ROHS, UL	CE, ROHS, UL
OUTER DIMENSIONS (LXWXH CM)	54X54X32	54X54X32	54X54X32

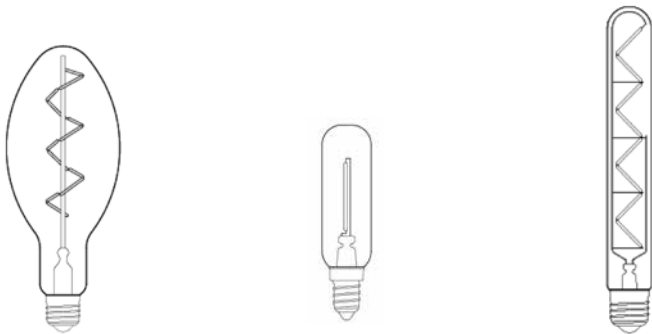


NAME	3W SQUIRREL CAGE	4W GAIA	6W GAIA
PRODUCT CODE	SQCG-3W-2200K-E27-8F-T	GAIA-4W-2200K-E27-T	GAIA-6W-2200K-E27-T
VOLTS	240V	240V	240V
WATTS	3W	4W	6W
CRI:		CRI: >95	CRI: >95
BASE	E26/E27/B22	E26/E27	E26/E27/B22
DIMMABLE	DIMMABLE	DIMMABLE	DIMMABLE
LUMENS	240 LUMENS	320 LUMENS	480 LUMENS
LUMENS/WATT	80 LUMENS/WATT	80 LUMENS/WATT	80 LUMENS/WATT
COLOUR TEMPERATURE	WARM TINTED/2200K	WARM TINTED/2200K	WARM TINTED/2200K
MERCURY FREE	MERCURY FREE = 0.0MG	MERCURY FREE = 0.0MG	MERCURY FREE = 0.0MG
SWITCH CYCLES	SWITCH CYCLES: 30,000	SWITCH CYCLES: 30,000	SWITCH CYCLES: 30,000
AVERAGE LIFESPAN	AVERAGE LIFESPAN: 30,000HRS	AVERAGE LIFESPAN: 30,000HRS	AVERAGE LIFESPAN: 30,000HRS
WATT REPLACEMENT	WATT REPLACEMENT: 25W	WATT REPLACEMENT: 30W	WATT REPLACEMENT: 45W
BULB DIMENSIONS	Ø64MM X L140MM	Ø125MM X L175MM	Ø125MM X L175MM
WARM UP TIME	WARM UP TIME: INSTANT	WARM UP TIME: INSTANT	WARM UP TIME: INSTANT
WORKING TEMPERATURE	WORKING TEMPERATURE:-20°C TO 40°C	WORKING TEMPERATURE:-20°C TO 40°C	WORKING TEMPERATURE:-20°C TO 40°C
WARRANTY	WARRANTY: 3 YEARS	WARRANTY: 3 YEARS	WARRANTY: 3 YEARS
DIMMING TECHNIQUE	TRAILING EDGE	TRAILING EDGE	TRAILING EDGE
SAFETY TAG	TALA CE 3W 220V 50HZ DATE	TALA CE 4W 220V 50HZ DATE	TALA CE 6W 220V 50HZ DATE
GLASS	TINTED	TINTED	TINTED
BASE	GOLD CAP	GOLD CAP	GOLD CAP
TYPE	ST64	G125	G125
PF	0.9	0.9	0.9
INPUT VOLTAGE	110-240V	110-240V	110-240V
IP	IP54	IP54	IP54
BEAM ANGLE	360	360	360
CERTIFICATES	CE, ROHS, UL	CE, ROHS, UL	CE, ROHS, UL
OUTER DIMENSIONS (LXWXH CM)	73X37X33	68X28X42	68X28X42

TECHNICAL SPECIFICATION | FEATURE RANGE



NAME	6W MINERVA	6W ZION	6W ARIES
PRODUCT CODE	MINV-6W-2200K-E27-T	ZION-6W-2200K-E27-T	ARES-6W-2200K-E27- NT
VOLTS	240V	240V	240V
WATTS	6W	6W	6W
CRI:		CRI: >95	CRI: >95
BASE	E26/E27	E26/E27	E26/E27/B22
DIMMABLE	DIMMABLE	DIMMABLE	DIMMABLE
LUMENS	360 LUMENS	420 LUMENS	480 LUMENS
LUMENS/WATT	60 LUMENS/WATT	70 LUMENS/WATT	80 LUMENS/WATT
COLOUR TEMPERATURE	SILVER SMOKE/2200K	WARM TINTED/2200K	WARM WHITE/2200K
MERCURY FREE	MERCURY FREE = 0.0MG	MERCURY FREE = 0.0MG	MERCURY FREE = 0.0MG
SWITCH CYCLES	SWITCH CYCLES: 30,000	SWITCH CYCLES: 30,000	SWITCH CYCLES: 30,000
AVERAGE LIFESPAN	AVERAGE LIFESPAN: 30,000HRS	AVERAGE LIFESPAN: 30,000HRS	AVERAGE LIFESPAN: 30,000HRS
WATT REPLACEMENT	WATT REPLACEMENT: 45W	WATT REPLACEMENT: 40W	WATT REPLACEMENT: 45W
BULB DIMENSIONS	Ø125MM X L175MM	Ø125MM X L175MM	Ø125MM X L175MM
WARM UP TIME	WARM UP TIME: INSTANT	WARM UP TIME: INSTANT	WARM UP TIME: INSTANT
WORKING TEMPERATURE	WORKING TEMPERATURE:-20°C TO 40°C	WORKING TEMPERATURE:-20°C TO 40°C	WORKING TEMPERATURE:-20°C TO 40°C
WARRANTY	WARRANTY: 3 YEARS	WARRANTY: 3 YEARS	WARRANTY: 3 YEARS
DIMMING TECHNIQUE	TRAILING EDGE	TRAILING EDGE	TRAILING EDGE
SAFETY TAG	TALA CE 6W 220V 50HZ DATE	TALA CE 6W 220V 50HZ DATE	TALA CE 6W 220V 50HZ DATE
GLASS	SILVER SMOKED	TINTED	CLEAR
BASE	GOLD CAP	GOLD CAP	GOLD CAP
TYPE	G125	G125	G125
PF	0.9	0.9	0.9
INPUT VOLTAGE	110-240V	110-240V	110-240V
IP	IP54	IP54	IP54
BEAM ANGLE	360	360	360
CERTIFICATES	CE, ROHS, UL	CE, ROHS, UL	CE, ROHS, UL
OUTER DIMENSIONS (LXWXH CM)	54X54X32	54X54X32	54X54X32



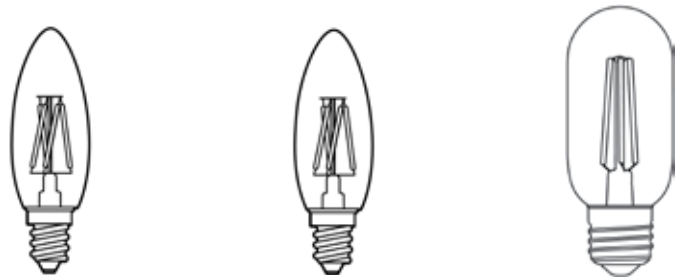
NAME	6W CHIMERA	1W TOTEM I	4W TOTEM II
PRODUCT CODE	CHIM-6W-2200K-E27-T	TOTM-I-1W-2200K-E14-T	TOTM-II-4W-2200K-E27-210-T
VOLTS	240V	240V	240V
WATTS	6W	1W	4W
CRI:		CRI: >95	CRI: >95
BASE	E26/E27	E12/E14	E26/E27
DIMMABLE	DIMMABLE	DIMMABLE	DIMMABLE
LUMENS	480 LUMENS	50 LUMENS	240 LUMENS
LUMENS/WATT	80 LUMENS/WATT	50 LUMENS/WATT	60 LUMENS/WATT
COLOUR TEMPERATURE	WARM TINTED/2200K	WARM TINTED/2200K	WARM TINTED/2200K
MERCURY FREE	MERCURY FREE = 0.0MG	MERCURY FREE = 0.0MG	MERCURY FREE = 0.0MG
SWITCH CYCLES	SWITCH CYCLES: 30,000	SWITCH CYCLES: 30,000	SWITCH CYCLES: 30,000
AVERAGE LIFESPAN	AVERAGE LIFESPAN: 30,000HRS	AVERAGE LIFESPAN: 30,000HRS	AVERAGE LIFESPAN: 30,000HRS
WATT REPLACEMENT	WATT REPLACEMENT: 45W	WATT REPLACEMENT: 5W	WATT REPLACEMENT: 25W
BULB DIMENSIONS	Ø90MM X L220MM	Ø20MM X L95MM	Ø30MM X L210MM
WARM UP TIME	WARM UP TIME: INSTANT	WARM UP TIME: INSTANT	WARM UP TIME: INSTANT
WORKING TEMPERATURE	WORKING TEMPERATURE:-20°C TO 40°C	WORKING TEMPERATURE:-20°C TO 40°C	WORKING TEMPERATURE:-20°C TO 40°C
WARRANTY	WARRANTY: 3 YEARS	WARRANTY: 3 YEARS	WARRANTY: 3 YEARS
DIMMING TECHNIQUE	TRAILING EDGE	TRAILING EDGE	TRAILING EDGE
SAFETY TAG	TALA CE 6W 220V 50HZ DATE	TALA CE 1W 220V 50HZ *DATE	TALA CE 4W 220V 50HZ DATE
GLASS	TINTED	TINTED	TINTED
BASE	GOLD CAP	GOLD CAP	GOLD CAP
TYPE	G125	C35	T30
PF	0.9	0.9	0.9
INPUT VOLTAGE	110-240V	110-240V	110-240V
IP	IP54	IP54	IP54
BEAM ANGLE	360	360	360
CERTIFICATES	CE, ROHS, UL	CE, ROHS, UL	CE, ROHS, UL
OUTER DIMENSIONS (LXWXH CM)	53X43X26	39X39X22	38X38X27

TECHNICAL SPECIFICATION | FEATURE RANGE



NAME	4W TOTEM III		
PRODUCT CODE	TOTM-III-4W-2200K-E27-300-T		
VOLTS	240V		
WATTS	4W		
CRI:			
BASE	E26/E27		
DIMMABLE	DIMMABLE		
LUMENS	320 LUMENS		
LUMENS/WATT	80 LUMENS/WATT		
COLOUR TEMPERATURE	WARM TINTED/2200K		
MERCURY FREE	MERCURY FREE = 0.0MG		
SWITCH CYCLES	SWITCH CYCLES: 30,000		
AVERAGE LIFESPAN	AVERAGE LIFESPAN: 30,000HRS		
WATT REPLACEMENT	WATT REPLACEMENT: 30W		
BULB DIMENSIONS	Ø30MM X L300MM		
WARM UP TIME	WARM UP TIME: INSTANT		
WORKING TEMPERATURE	WORKING TEMPERATURE:-20°C TO 40°C		
WARRANTY	WARRANTY: 3 YEARS		
DIMMING TECHNIQUE	TRAILING EDGE		
SAFETY TAG	TALA CE 4W 220V 50HZ DATE		
GLASS	TINTED		
BASE	GOLD CAP		
TYPE	T30		
PF	0.9		
INPUT VOLTAGE	110-240V		
IP	IP54		
BEAM ANGLE	360		
CERTIFICATES	CE, ROHS, UL		
OUTER DIMENSIONS (LXWXH CM)	38X38X27		

TECHNICAL SPECIFICATION | CLASSIC RANGE

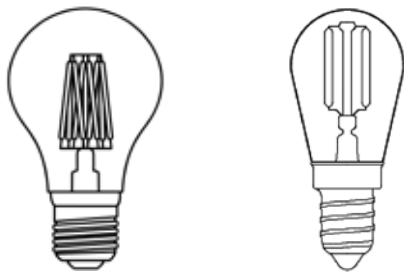


NAME	2W CANDLE	4W CANDLE	3W LURRA
PRODUCT CODE	CAND-2W-2500K-E14- NT	CAND-4W-2500K-E14- NT	LURA-3W-2200K-E27-T
VOLTS	240V	240V	240V
WATTS	1.6W	3.5W	3W
CRI:		CRI: >95	CRI: >95
BASE	E12/E14/B15	E12/E14/B15	E26/E27
DIMMABLE	DIMMABLE	DIMMABLE	DIMMABLE
LUMENS	170 LUMENS	320 LUMENS	240 LUMENS
LUMENS/WATT	106 LUMENS/WATT	91 LUMENS/WATT	80 LUMENS/WATT
COLOUR TEMPERATURE	WARM WHITE/2500K	WARM WHITE/2500K	WARM TINTED/2200K
MERCURY FREE	MERCURY FREE = 0.0MG	MERCURY FREE = 0.0MG	MERCURY FREE = 0.0MG
SWITCH CYCLES	SWITCH CYCLES: 30,000	SWITCH CYCLES: 30,000	SWITCH CYCLES: 30,000
AVERAGE LIFESPAN	AVERAGE LIFESPAN: 30,000HRS	AVERAGE LIFESPAN: 30,000HRS	AVERAGE LIFESPAN: 30,000HRS
WATT REPLACEMENT	WATT REPLACEMENT: 20W	WATT REPLACEMENT: 35W	WATT REPLACEMENT: 25W
BULB DIMENSIONS	Ø35MM X L100MM	Ø35MM X L100MM	Ø38MM X L108MM
WARM UP TIME	WARM UP TIME: INSTANT	WARM UP TIME: INSTANT	WARM UP TIME: INSTANT
WORKING TEMPERATURE	WORKING TEMPERATURE:-20°C TO 40°C	WORKING TEMPERATURE:-20°C TO 40°C	WORKING TEMPERATURE:-20°C TO 40°C
WARRANTY	WARRANTY: 3 YEARS	WARRANTY: 3 YEARS	WARRANTY: 3 YEARS
DIMMING TECHNIQUE	TRAILING EDGE	TRAILING EDGE	TRAILING EDGE
SAFETY TAG	TALA CE 2W 220V 50HZ *DATE	TALA CE 4W 220V 50HZ *DATE	TALA CE 3W 220V 50HZ DATE
GLASS	CLEAR	CLEAR	TINTED
BASE	GOLD CAP	GOLD CAP	GOLD CAP
TYPE	C35	C35	A60
PF	0.9	0.9	0.9
INPUT VOLTAGE	110-240V	110-240V	110-240V
IP	IP54	IP54	IP54
BEAM ANGLE	360	360	360
CERTIFICATES	CE, ROHS, UL	CE, ROHS, UL	CE, ROHS, UL
OUTER DIMENSIONS (LXWXH CM)	37X22X21	37X22X21	48X25X25

TECHNICAL SPECIFICATION | CLASSIC RANGE



NAME	3W PLUTO	3W PLUTO	3W CROWN
PRODUCT CODE	PLUT-3W-2200K-E14-T	PLUT-3W-2500K-E14-NT	CRWN-3W-2500K-E27-NT
VOLTS	240V	240V	240V
WATTS	3W	3W	3W
CRI:		CRI: >95	CRI: >95
BASE	E12/E14	E12/E14	E26/E27/B22
DIMMABLE	DIMMABLE	DIMMABLE	DIMMABLE
LUMENS	240 LUMENS	240 LUMENS	300 LUMENS
LUMENS/WATT	80 LUMENS/WATT	80 LUMENS/WATT	100 LUMENS/WATT
COLOUR TEMPERATURE	WARM TINTED/2200K	WARM WHITE/2500K	WARM WHITE/2500K
MERCURY FREE	MERCURY FREE = 0.0MG	MERCURY FREE = 0.0MG	MERCURY FREE = 0.0MG
SWITCH CYCLES	SWITCH CYCLES: 30,000	SWITCH CYCLES: 30,000	SWITCH CYCLES: 30,000
AVERAGE LIFESPAN	AVERAGE LIFESPAN: 30,000HRS	AVERAGE LIFESPAN: 30,000HRS	AVERAGE LIFESPAN: 30,000HRS
WATT REPLACEMENT	WATT REPLACEMENT: 25W	WATT REPLACEMENT: 25W	WATT REPLACEMENT: 30W
BULB DIMENSIONS	Ø45MM X L80MM	Ø45MM X L80MM	Ø60MM X L108MM
WARM UP TIME	WARM UP TIME: INSTANT	WARM UP TIME: INSTANT	WARM UP TIME: INSTANT
WORKING TEMPERATURE	WORKING TEMPERATURE: -20°C TO 40°C	WORKING TEMPERATURE: -20°C TO 40°C	WORKING TEMPERATURE: -20°C TO 40°C
WARRANTY	WARRANTY: 3 YEARS	WARRANTY: 3 YEARS	WARRANTY: 3 YEARS
DIMMING TECHNIQUE	TRAILING EDGE	TRAILING EDGE	TRAILING EDGE
SAFETY TAG	TALA CE 3W 220V 50HZ DATE	TALA CE 3W 220V 50HZ DATE	TALA CE 3W 220V 50HZ DATE
GLASS	TINTED	CLEAR	CLEAR
BASE	GOLD CAP	GOLD CAP	GOLD CAP
TYPE	G45	G45	A60
PF	0.9	0.9	0.9
INPUT VOLTAGE	110-240V	110-240V	110-240V
IP	IP54	IP54	IP54
BEAM ANGLE	360	360	360
CERTIFICATES	CE, ROHS, UL	CE, ROHS, UL	CE, ROHS, UL
OUTER DIMENSIONS (LXWXH CM)	52X28X20	52X28X20	68X36X28



NAME	6W GLOBE	2W PYGMY	
PRODUCT CODE	GLOB-6W-2500K-E27-NT	PYGM-2W-2200K-E14- T	
VOLTS	240V	240V	
WATTS	6W	2W	
CRI:	CRI: >95	CRI: >95	
BASE	E26/E27/B22	E12/E14	
DIMMABLE	DIMMABLE	DIMMABLE	
LUMENS	480 LUMENS	120 LUMENS	
LUMENS/WATT	80 LUMENS/WATT	60 LUMENS/WATT	
COLOUR TEMPERATURE	WARM WHITE/2500K	WARM TINTED/2200K	
MERCURY FREE	MERCURY FREE = 0.0MG	MERCURY FREE = 0.0MG	
SWITCH CYCLES	SWITCH CYCLES: 30,000	SWITCH CYCLES: 30,000	
AVERAGE LIFESPAN	AVERAGE LIFESPAN: 30,000HRS	AVERAGE LIFESPAN: 30,000HRS	
WATT REPLACEMENT	WATT REPLACEMENT: 50W	WATT REPLACEMENT: 12W	
BULB DIMENSIONS	Ø60MM X L108MM	Ø28MM X L65MM	
WARM UP TIME	WARM UP TIME: INSTANT	WARM UP TIME: INSTANT	
WORKING TEMPERATURE	WORKING TEMPERATURE: -20°C TO 40°C	WORKING TEMPERATURE: -20°C TO 40°C	
WARRANTY	WARRANTY: 3 YEARS	WARRANTY: 3 YEARS	
DIMMING TECHNIQUE	TRAILING EDGE	TRAILING EDGE	
SAFETY TAG	TALA CE 6W 220V 50HZ DATE	TALA CE 2W 220V 50HZ *DATE	
GLASS	CLEAR	TINTED	
BASE	GOLD CAP	GOLD CAP	
TYPE	A60	C35	
PF	0.9	0.9	
INPUT VOLTAGE	110-240V	110-240V	
IP	IP54	IP54	
BEAM ANGLE	360	360	
CERTIFICATES	CE, ROHS, UL	CE, ROHS, UL	
OUTER DIMENSIONS (LXWXH CM)	68X36X28	35X35X18	

RETAILERS

HEAL'S

THE  
CONRAN  
SHOP

SELFRIDGES & CO

OKA

SCP

JOHN CULLEN  
INSPIRE WITH LIGHT

CW  
Christopher Wray

HF  
HECTOR FINCH  
LIGHTING

ROCKETT  
ST GEORGE

Caducus  
Folium+

Fenwick

ANDREW MARTIN

CasaShop

LIGHTING DESIGN  
INTERNATIONAL

ORIGINAL BTC  
BRITISH LIGHTING MANUFACTURERS  
LONDON 1982

BENCHMARK

PROJECTS & COLLABORATIONS

SOHO HOUSE

Chiltern  
FIREHOUSE

S  
The Park Lane  
HOTEL

STANFORD  
UNIVERSITY

LIVING  
VENTURES

Red Bull

Tyson  
LIGHTING

“We think Edison would approve”

THE WALL STREET JOURNAL.

“Founded by university friends,  
Tala LED’s lightbulbs are poised  
to revolutionise the industry”

Awarded  
“Best for mixing retro with eco”

“If that wasn’t enough, for every  
200 units sold, Tala plants  
10 trees; making their products  
truly carbon negative”

Courier

WIRED

HOUSE  
& GARDEN

“Tala’s distinctive design  
Rubic combines classic decorative  
qualities, industrial influences  
and LED technology”

“These beautiful new bulbs from  
Tala, a London startup founded by  
four young Edinburgh University  
bright sparks, produce the closest  
I’ve seen to real, instant-on, flicker  
free light, using 10 percent of the  
energy and expected to shine  
for eight years plus”

“British lighting brand Tala  
mixes design kudos with  
energy-friendly bulbs”

BOUTIQUE  
HOTELIER

FT  
FINANCIAL TIMES

STYLIST  
MAGAZINE

Also featured in:

darc

The Telegraph

MONOCLE

how to  
spend it

THE SCOTSMAN



## DISTRIBUTORS

For more information on becoming  
a distributor for Tala please contact  
[distribution@talaed.com](mailto:distribution@talaed.com)



### UK - RETAIL

#### **McInnes Cook**

Karl & John Cook  
Rudgate Business Park  
Tockwith YO26 7RD  
T: +44 (0)1423 359988  
E: [info@mcinnescook.com](mailto:info@mcinnescook.com)  
W: [www.mcinnescook.com](http://www.mcinnescook.com)

### ITALY

#### **Gianfausto Abbatalini**

Via Passo del Moncenisio, 40  
25136 Brescia IT  
M: +39 3895176926  
E: [gabbatalini@gmail.com](mailto:gabbatalini@gmail.com)

### GERMANY

#### **Marc Ulrich Stüvecke**

c/o Kanthaus GmbH  
10623 Berlin  
T: +49 30 310 14 250  
E: [marc@stuevecke.com](mailto:marc@stuevecke.com)

### NETHERLANDS

#### **Roosdesign Amsterdam bv**

Marcel Roos  
Amsterdam BV  
Postbus 7941  
E: [info@roosdesign.eu](mailto:info@roosdesign.eu)  
T: +31 (0)6 284 26 153  
W: [www.roosdesign.eu](http://www.roosdesign.eu)

### SCANDINAVIA

#### **Piffany Copenhagen**

Lauritz Lykke Smed  
T: +4570666670  
IE: [s@piffany.eu](mailto:s@piffany.eu)  
Bymosevej 17  
3200 helsingør  
W: [www.piffany.eu](http://www.piffany.eu) UK - Retail

### USA & LATIN AMERICA

#### **Cadacus Folium**

Colleen Bennett  
901 E. Union Street  
Morganton, NC 28655  
USA  
T: +1 336 624 1689  
E: [colleen@talaed.com](mailto:colleen@talaed.com)

### UK - CONTRACT

#### **Tyson Lighting**

Andrew Gibson  
The HQ Building Old Granada  
Studios,  
Atherton Street,  
Manchester, M3 4FD  
T: +44 (0)1254 266017  
E: [sales@tysonlighting.com](mailto:sales@tysonlighting.com)

### FRANCE

#### **Yannick Damblant**

ADN Distribution  
23 Rue Emile Bourgault  
56000 Vannes  
France  
T: 0033 6 85 66 80 38  
E: [ydambiant@adndistribution.fr](mailto:ydambiant@adndistribution.fr)

### SPAIN

#### **Javier Mazon and Sergi Osuna**

ContractDeco  
Deu i mata 150, local 2  
Esquina pasaje 5 torres  
08029 Barcelona  
Spain  
T: 0034 935 131 684  
E: [info@contractdeco.es](mailto:info@contractdeco.es)

### BELGIUM

#### **Els Vandenberghe**

Beluce  
Pannenstraat 119  
B-8300 Knokke-Heist  
Belgium  
T: 0032 50 34 61 86  
E: [info@beluce.be](mailto:info@beluce.be)

### SWITZERLAND

#### **Rotel AG**

Matthias Burger  
Parkstrasse 43  
CH-5012 Schönenwerd  
Phone +41 62 787 77 75  
Fax +41 62 787 77 10  
Email: [m.burger@rotel.ch](mailto:m.burger@rotel.ch)  
Web [www.rotel.ch](http://www.rotel.ch)

### CANADA

#### **GWN innovations inc.**

Ric Williams  
T: +1 780 935 0966  
E: [ric@gwninnovations.com](mailto:ric@gwninnovations.com)  
Jay Shuckle  
T: +1 780 405 7732  
E: [jay@gwninnovations.com](mailto:jay@gwninnovations.com)

Tala  
Unit 56  
Regent Studios  
8 Andrews Road  
London  
E8 4QN

Contact:

T: +44 (0) 20 3026 324

E: [retail@talaed.com](mailto:retail@talaed.com)

E: [distribution@talaed.com](mailto:distribution@talaed.com)

W: [www.talaed.com](http://www.talaed.com)

Tala LED invests in innovation and continuously  
aims to develop, source, manufacture  
and improve the lighting range.



@tala



@WorldofTala



[retail@talaed.com](mailto:retail@talaed.com)

All product descriptions in this Tala LED brochure  
are intended as a general guide to our range.  
As such our specifications are subject to alteration  
as we develop and do not form any part of a contract.  
Tala accepts no liability for issues arising from a reliance  
of guide data to the extent permitted by law.

VAT Number: 182754681

